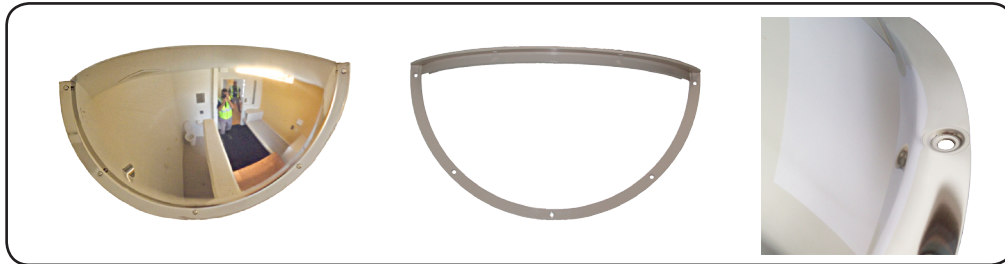


**DuraVision™ Convex Mirror Product Sheet:**



**Situation Images:**



▶ Cell Observation



▶ Safely View Hard to See Areas



▶ View Safely Before Entering the Cell

**Half Dome Stainless Steel**

The DuraVision Stainless Steel Half Dome is manufactured from highly polished mirror grade stainless steel. The Half Dome has a 180 degree wide angle reflection and when optimally positioned the entire cell can be viewed at a glance from the observation window. The unique frames and hole design make this mirror strong, effective and virtually ligature free.

**Features**

- Virtually indestructible and unbreakable mirror quality polished stainless steel face, designed to maximise the viewing area which will provide added safety
- Counter-Sunk and Counter-Step holes designed to take security head fasteners such as Rawl Spikes or Torx Screws
- The mirror is locked into the unique steel frame which ensures that the risk of the mirror being tampered with is reduced significantly.
- Virtually a maintenance free, long lasting, unbreakable surveillance system.

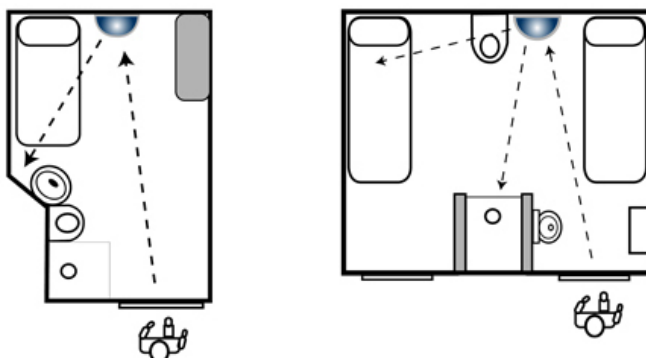
**Suitable Uses**

- In cells for safe inspection
- Day rooms and visitation areas
- T-Junction intersections in corridors

**Specifications**

Code	Size	View Distance	Mirror Face	Frame	Mounting Holes
16529HD	500x250mm	Under 6m	Stainless Steel	Powder Coated Steel	6

**Positioning in Cell**



**DuraVision™ Mirror Systems**

Find our more about the great range of DuraVision Mirror Systems at our website...



**www.duravision.net**  
**www.correctionsmirror.com**